

STANDARD ARRIVAL CHART (TRANSITION) INSTRUMENT (STAR) - ICAO

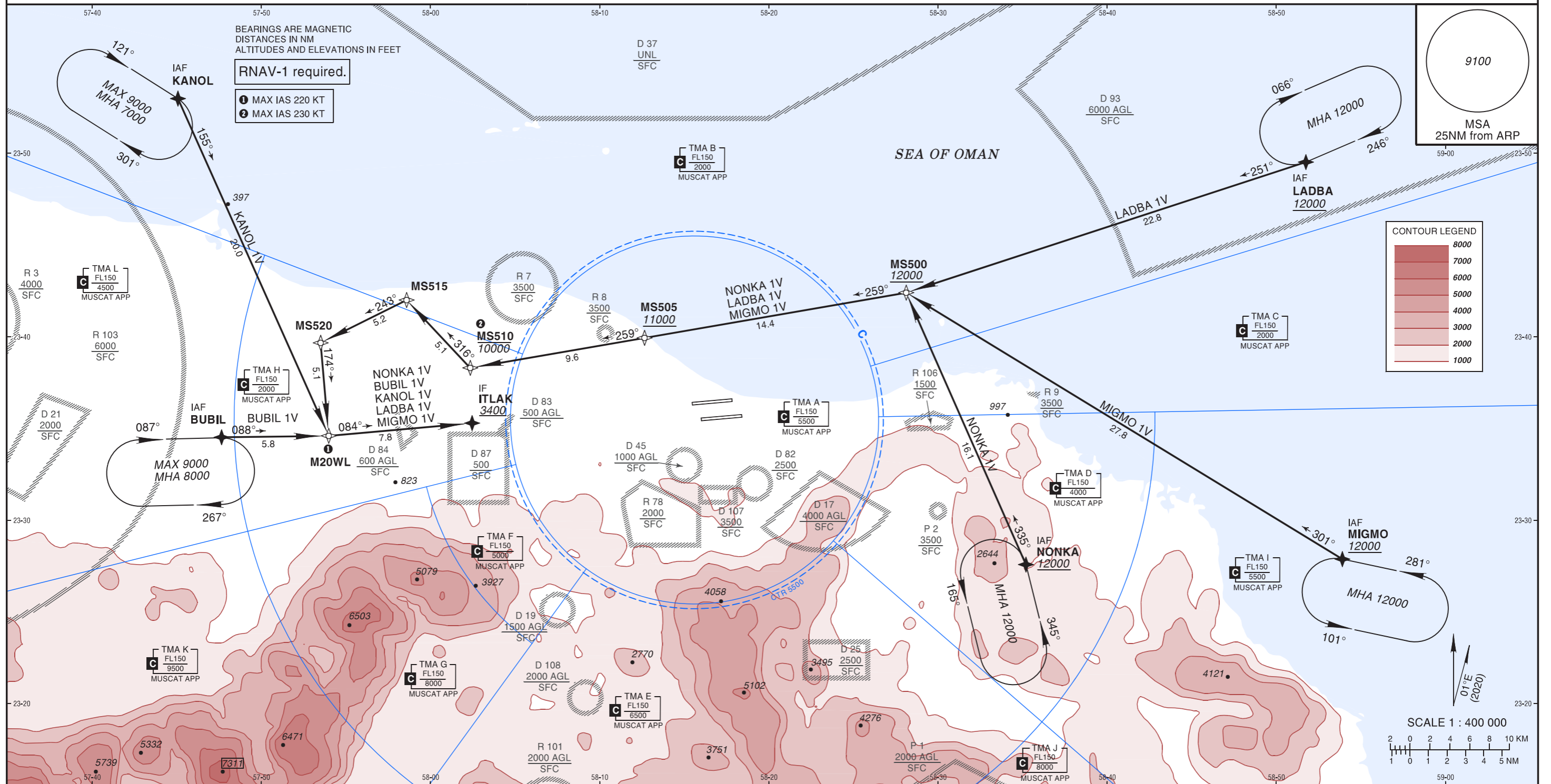
STANDARD ARRIVAL CHART  
(TRANSITION) INSTRUMENT  
(STAR) - ICAO

AD ELEV 49 FT  
Trans Alt 13000  
Trans Level FL150

ATIS	126.800
TWR	118.825
APP/RAD	121.200
GND	121.800

MUSCAT/Muscat Intl  
OMAN  
RWY 08L

LADBA 1V, MIGMO 1V, NONKA 1V, BUBIL 1V, KANOL 1V RNAV (GNSS) TRANSITION



STAR	ROUTING
<b>LADBA 1V</b>	LADBA at or above 12000 to MS500 at or above 12000. Turn RIGHT to MS505 at or above 11000, to MS510 at or below 10000. Turn RIGHT to MS515, turn LEFT to MS520, turn LEFT to M20WL. Turn LEFT to ITLAK at or above 3400.
<b>MIGMO 1V</b>	MIGMO at or above 12000 to MS500 at or above 12000. Turn LEFT to MS505 at or above 11000, to MS510 at or below 10000. Turn RIGHT to MS515, turn LEFT to MS520, turn LEFT to M20WL. Turn LEFT to ITLAK at or above 3400.
<b>NONKA 1V</b>	NONKA at or above 12000 to MS500 at or above 12000. Turn LEFT to MS505 at or above 11000, to MS510 at or below 10000. Turn RIGHT to MS515, turn LEFT to MS520, turn LEFT to M20WL. Turn LEFT to ITLAK at or above 3400.
<b>BUBIL 1V</b>	BUBIL between 8000 and 9000 to M20WL. To ITLAK at or above 3400.
<b>KANOL 1V</b>	KANOL between 7000 and 9000 to M20WL. Turn LEFT to ITLAK at or above 3400.

**Holding Instruction/Areas RNAV (GNSS) ARRIVAL TRANSITION RWY 08L**

Path descriptor	Fix identifier	Inbound course M (T)	Leg Distance	Turn direction	Minimum altitude	Maximum altitude	Speed	Magnetic variation	Navigation performance
Hold	BUBIL	087° (088.0°)	1 MIN	R	8000	9000	230 KT	1°E	
Hold	KANOL	121° (122.0°)	1 MIN	R	7000	9000	230 KT	1°E	
Hold	LADBA	246° (247.0°)	1 MIN	R	12000		230 KT	1°E	
Hold	MIGMO	281° (282.0°)	1 MIN	L	12000		230 KT	1°E	
Hold	NONKA	345° (346.1°)	1 MIN	L	12000		230 KT	1°E	

**Route Description: RNAV (GNSS) ARRIVAL TRANSITION RWY 08L**

Path descriptor	Fix identifier	Flyover	Course Magnetic (True)	Turn direction	Altitude	Speed limit	Magnetic variation	Distance	Navigation performance
<b>LADBA 1V TRANSITION</b>									
IF	LADBA				+12000		1°E		RNAV 1
TF	MS500		251° (251.9°)		+12000		1°E	22.8	RNAV 1
TF	MS505		259° (260.2°)	R	+11000		1°E	14.4	RNAV 1
TF	MS510		259° (260.3°)		-10000	230 KT	1°E	9.6	RNAV 1
TF	MS515		316° (316.9°)	R			1°E	5.1	RNAV 1
TF	MS520		243° (243.5°)	L			1°E	5.2	RNAV 1
TF	M20WL		174° (175.0°)	L		220 KT	1°E	5.1	RNAV 1
TF	ITLAK		084° (084.9°)	L	+3400		1°E	7.8	RNAV 1
<b>MIGMO 1V TRANSITION</b>									
IF	MIGMO				+12000		1°E		RNAV 1
TF	MS500		301° (301.5°)		+12000		1°E	27.8	RNAV 1
TF	MS505		259° (260.2°)	L	+11000		1°E	14.4	RNAV 1
TF	MS510		259° (260.3°)		-10000	230 KT	1°E	9.6	RNAV 1
TF	MS515		316° (316.9°)	R			1°E	5.1	RNAV 1
TF	MS520		243° (243.5°)	L			1°E	5.2	RNAV 1
TF	M20WL		174° (175.0°)	L		220 KT	1°E	5.1	RNAV 1
TF	ITLAK		084° (084.9°)	L	+3400		1°E	7.8	RNAV 1
<b>NONKA 1V TRANSITION</b>									
IF	NONKA				+12000		1°E		RNAV 1
TF	MS500		335° (336.2°)		+12000		1°E	16.1	RNAV 1
TF	MS505		259° (260.2°)	L	+11000		1°E	14.4	RNAV 1
TF	MS510		259° (260.3°)		-10000	230 KT	1°E	9.6	RNAV 1
TF	MS515		316° (316.9°)	R			1°E	5.1	RNAV 1
TF	MS520		243° (243.5°)	L			1°E	5.2	RNAV 1
TF	M20WL		174° (175.0°)	L		220 KT	1°E	5.1	RNAV 1
TF	ITLAK		084° (084.9°)	L	+3400		1°E	7.8	RNAV 1
<b>BUBIL 1V TRANSITION</b>									
IF	BUBIL				-9000 +8000		1°E		RNAV 1
TF	M20WL		088° (089.3°)			220 KT	1°E	5.8	RNAV 1
TF	ITLAK		084° (084.9°)		+3400		1°E	7.8	RNAV 1

**Route Description: RNAV (GNSS) ARRIVAL TRANSITION RWY 08L**

Path descriptor	Fix identifier	Flyover	Course Magnetic (True)	Turn direction	Altitude	Speed limit	Magnetic variation	Distance	Navigation performance
<b>KANOL 1V TRANSITION</b>									
IF	KANOL				-9000 +7000		1°E		RNAV 1
TF	M20WL		155° (155.9°)			220 KT	1°E	20.0	RNAV 1
TF	ITLAK		084° (084.9°)	L	+3400		1°E	7.8	RNAV 1

**Aeronautical Data Tabulation: RNAV (GNSS) ARRIVAL TRANSITION RWY 08L**

Waypoint / Fix	Latitude	Longitude	Latitude (MIN)	Longitude (MIN)	Notes
BUBIL	N23°34'31.53"	E057°47'38.97"	N23°34.526'	E057°47.650'	
KANOL	N23°52'57.87"	E057°45'04.18"	N23°52.965'	E057°45.070'	
LADBA	N23°49'30.65"	E058°51'45.04"	N23°49.511'	E058°51.751'	
MIGMO	N23°27'52.76"	E058°53'54.28"	N23°27.879'	E058°53.905'	
MS500	N23°42'24.00"	E058°28'07.00"	N23°42.400'	E058°28.117'	
MS505	N23°39'56.00"	E058°12'39.00"	N23°39.933'	E058°12.650'	
MS510	N23°38'18.00"	E058°02'21.00"	N23°38.300'	E058°02.350'	
MS515	N23°42'00.00"	E057°58'35.00"	N23°42.000'	E057°58.583'	
MS520	N23°39'40.00"	E057°53'30.00"	N23°39.667'	E057°53.500'	
M20WL	N23°34'35.91"	E057°53'58.73"	N23°34.599'	E057°53.979'	
ITLAK	N23°35'17.84"	E058°02'27.82"	N23°35.297'	E058°02.464'	
NONKA	N23°27'35.00"	E058°35'12.00"	N23°27.583'	E058°35.200'	